

The
Bermondsey
SquareHOTEL

Bermondsey Square
Tower Bridge Road
Southwark
London SE1 3UN

T 0870 111 2525
F 0870 111 2526
E info@bespokehotels.com

bespokehotels.com

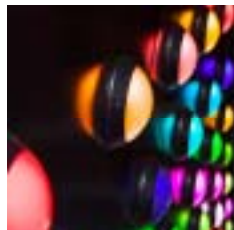
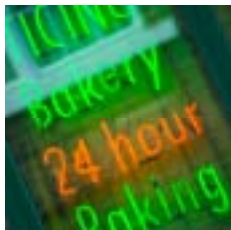
We call it **b²**

“bespoke”
hotels to wake up to

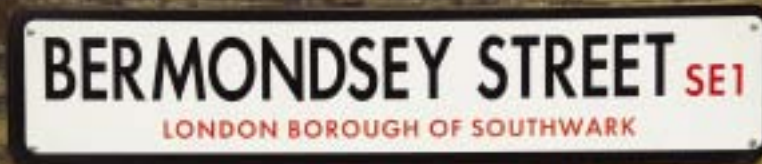
- 75 bedrooms
- Four rooftop suites
- Hot tub with views of the London skyline
- Alfie’s Kitchen, restaurant, bar, deli
- Terrace with 120 alfresco seats
- Two beauty treatment rooms
- Members club
- Conference rooms
- Wi-fi network
- Business centre
- Valet parking

The
Bermondsey
SquareHOTEL

We call it **b²**



The
**Be there or be
Square**HOTEL



According to Time Out magazine, “If we were giving out awards for **cool** streets, the gong for **funkiest** newcomer would be scooped by SE1’s Bermondsey Street”.

Well it’s even **cooler** and **funkier** now that the Bermondsey Square Hotel and Alfie’s Kitchen are here.

No wonder Vogue magazine said in December 2008 “Bermondsey Street – now a destination for South London’s most stylish shoppers. The gradual transformation of this mile-long stretch has been nothing short of miraculous.”



The all-new Bermondsey Square Hotel (or b² as we call it) is in a prime location for both business-people and pleasure-pups. It's just a bridge-hop from the City of London.

There's a string of fine eateries stretching along the Street, including our very own Alfie's Kitchen. You'll find a couple of London's great markets nearby – Borough Market for food, and Bermondsey Market for antiques. There's fashionable galleries and fashion galore.

Shakespeare's Globe and Sir Norman's glass gherkin are just a stone's throw...on second thoughts, let's just say...they are within easy walking distance.

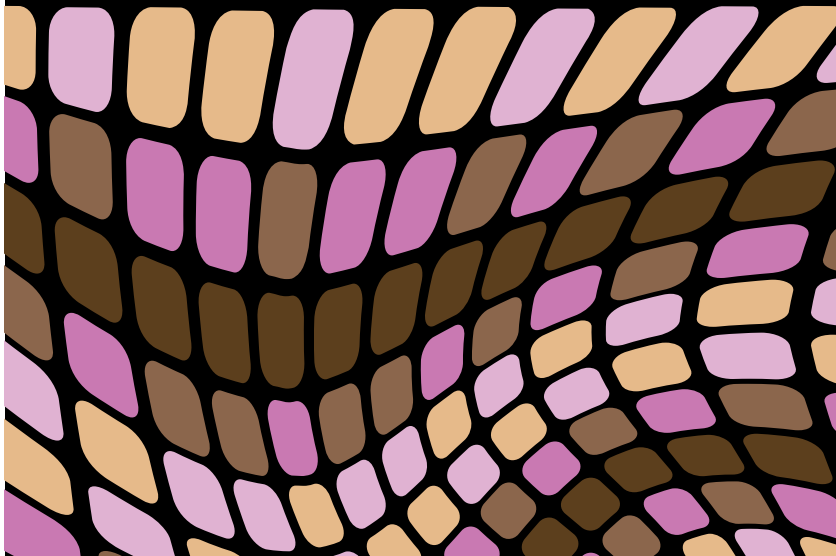
Come and discover London's b² – a “bespoke” hotel.

Should I stay or should I go?

You should go and stay. Definitely. You'll find bedrooms and suites so chic you might not want to sleep, and illuminated drench showers in every bathroom. There's a heavenly seventh floor where the four Bermondsey suites look out over London's spectacular skyline.



So Alfie's Kitchen. What's it all about? Somewhere to graze, gaze and laze. A new addition to Bermondsey's burgeoning reputation as the place to play. As the man himself would say, "Anyone in the mood for a little Alfie, straight up?"



and who's responsible for all this?

It's a "**bespoke**" hotel. The latest addition to an eclectic collection of fine English hotels. And it's part of the super-green £60 million Bermondsey Square regeneration project (www.bermondseysquare.co.uk) which features, as well as our hotel, 76 apartments, an arthouse cinema, restaurant, offices and shops.

