

beattitude

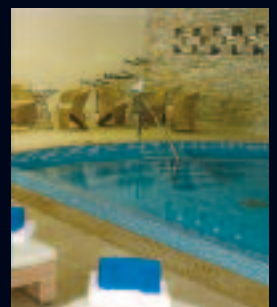
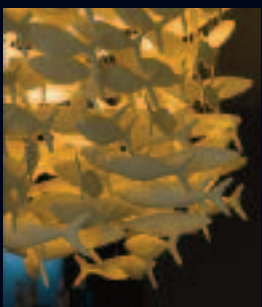
the newsletter of the **B**espoke Hotel Company

Edition 15



inside

From the Cotswolds to Jamaica. It's better to be bespoke



behold the front page...

Off the peg? Never. Run of the mill? No thanks. Generic? You cannot be serious.

We're bespoke, and proud of it. The only common factors here are great service, a flair for hospitality and recognition that you want to be treated like an individual, not a room number. And people seem to like it. Our eclectic group of hotels just keeps on growing.

Check in and check us out, and join the growing number of leisure and business guests who agree that it's better to be bespoke.

...because there's always something new at the Bespoke Hotel Group. To keep fully up to speed, you'll need to go to www.bespokehotels.com where you'll find the very latest news about our eclectic portfolio, that now stretches from Greenwich to Grenada, from Bermondsey to Jamaica.



All new website

Take a look at our all-new website. With more than 50 hotels worldwide, there's a Bespoke Hotel for you. Now, you should find it much easier to identify the perfect place for your holiday, city break or business trip. The website is cleaner, faster and designed to help you search by place, type and facilities so that you can quickly home in on the hotel for you.



Bespoke Hotels
The Old Rectory
Windsor End
Beaconsfield
Bucks HP9 2JW

Masterchef maestro books in to Bermondsey

Gregg Wallace, the face of BBC's Masterchef series, cookery book author and restaurateur has booked a permanent table at The Bermondsey Square Hotel. *Gregg's Table* is the new restaurant at the Bermondsey boutique.



Entrepreneur of the Year

Oxford Brookes University third-year student Harriet Small is the Bespoke Hotels 2011 Entrepreneur of the Year. The challenge, for students on the Creativity and Entrepreneurship in Hospitality and Tourism module, is hosted each year at the Bermondsey Square Hotel in London and offers a prize to the winning student of £1,000.

Harriet's innovative 'Loco' concept linked allotment and small farm owners to local eateries through a voucher scheme and bicycle distribution network.

It's nice to be liked

More than 2,000 people have liked us on Facebook and we have 1,000 followers on Twitter. Why not join them, and be the first to hear about Bespoke news, offers and competitions.

Follow us on  



Live fast

One of the stunning images that adorn the walls of The Bermondsey Square Hotel. Bermondsey has a thriving restaurant, bar and club scene, art galleries, design studios and boutique shops.

In the media

'I've eaten meals costing five times the price and been less satisfied. Every plaudit directed at **The Horse and Groom** is justified.'

'For a touch of city chic, look no further than **Ten Manchester Street**. Located in super stylish Marylebone, for the ultimate romantic experience check into the Grand.'

'**The Talbot Ripley** is ideal for that relaxing weekend away. It's the little luxuries that make this hotel feel like a home away from home.'

'**Jake's** is exactly what you want when you hit the reggae island – a little pocket of quirky, eccentric sandiness.'

'**The Bermondsey Square Hotel** is a super-stylish boutique hotel.'

spotlight on Chipping Campden



The elegant High Street of Chipping Campden is home to two properties that joined the Bespoke group in 2011 – Cotswold House Hotel and Spa, and the Noel Arms Hotel.

This ancient Cotswolds town has wonderful historic buildings, interesting shops and restaurants and, of course, some of the most beautiful countryside in the world within walking distance.

The individuality of the town is best exemplified by the annual Olimpick Games, featuring eccentric sports such as Shin Kicking, Tug of War and Championship of the Hill. If you can't get tickets for the London games, then you know where to go!



Cotswold House Hotel and Spa

"Each room is very different but all remain faithful to the decor of a country manor house and are the perfect place for afternoon naps and hours spent wrapped in dressing gowns after that muddy walk", says Elle magazine.



↑ *The Temple Spa at Cotswold House – with hydrotherapy pool, steam-room and treatment rooms.*

← *The gardens at Cotswold House – perfect for a summer's evening.*

The Noel Arms

The Noel Arms is one of the oldest inns in the Cotswolds, with bedrooms, restaurant, function rooms, conservatory and coffee shop.



bedtime is better when it's **bespoke**



we've been busy **bees**



Cotswold House Hotel and Spa, Chipping Campden



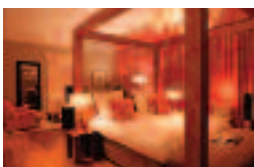
Noel Arms, Chipping Campden



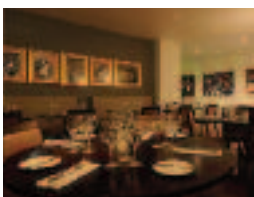
The Speech House Hotel, Gloucestershire



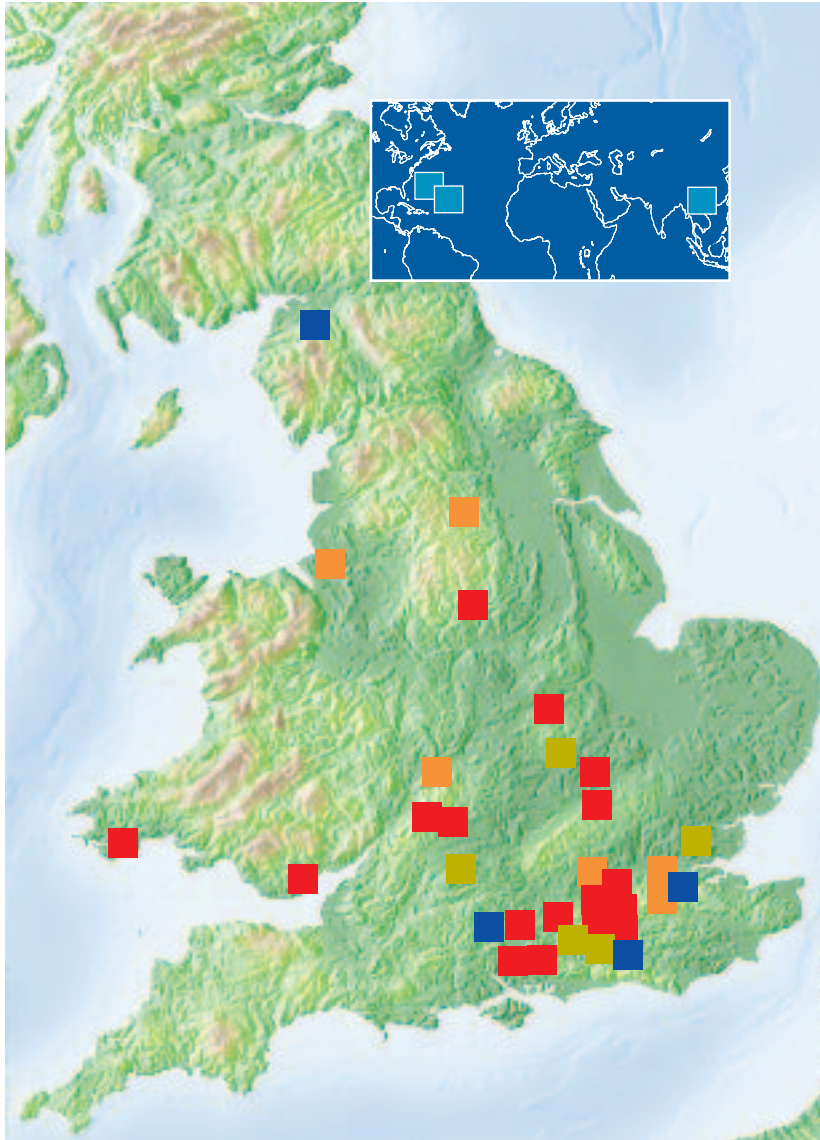
Rick's Hotel, Edinburgh



Tiger Lily Hotel, Edinburgh



The Humber Royal, Lincolnshire



- **beloved** luxury bespoke hotels
- **behip** designer bespoke hotels
- **befriend** superior bespoke hotels
- **beinns** boutique hotels and inns
- **becoming** bespoke hotels under construction
- **being there** bespoke hotels abroad
- **beapart** chic apartments

For information on all bespoke hotels,
go to: www.bespokehotels.com



Wood Norton Hall
has been restored as
a chic boutique
hotel, reopening
2012.



Chateau Eza in France



Gran Hotel Son Net in Majorca



I Pretti Resort in Italy



*Jake's Hotel and Spa
in Jamaica*



*Mount Hartman Bay Estate
in Grenada*

being there



Spicy new addition

Mount Hartman Bay Estate is Grenada's newest and most exclusive hotel, and the latest to join the Bespoke jet-set.

With just 12 sumptuous suites, it's never going to be crowded here. There are beautiful grounds, a stunning infinity pool overlooking the bay, a private beach and jetty with helipad.

The island of Grenada, just 21 miles long and 12 miles wide, is where the delicious breezes

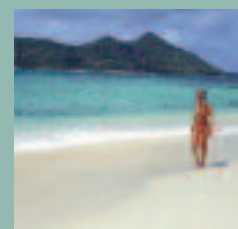
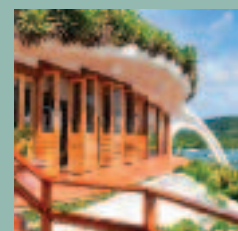
of the Trade Winds blow. There are more spices per square mile here than any other place on the planet, and the most extraordinary variety of landscapes, with a central mountain range, sky forests, waterfall-filled gorges and stunning beaches.

Offshore is equally beautiful; the diving ranks among the finest in the Caribbean. The warmth of the people is matched by average temperatures of 26-30C (79-86F) with the evenings practically as warm as the days. What are you waiting for?



"All 12 suites are equally enormous, with spectacular views, and all boast the latest hi-tech sound systems and plasma screens – as you would expect from Mount Hartman Bay's entrepreneur owner...a man of vision and means, and everything in this villa is on a generous scale: beds, wardrobes, soaps, wine cellar."

Harper's Bazaar



being bad is better when it's **bespoke**

